

GPS IVR Guide

Version: 1.2
01 December 2022

Global Processing Services
6th Floor, Victoria House, Bloomsbury Square, London, WC1B 4DA
Support Email: ops24@globalprocessing.com
Support Phone: +442037409682

For the latest technical documentation, see the [Developer Portal](#).

© 2022-2023 Global Processing Services Ltd. 6th Floor, Victoria House, Bloomsbury Square, London, WC1B 4DA
Publication number: IVR-1.2-12/1/2022

Copyright

© 2022-2023 Global Processing Services Ltd. All Rights Reserved.

The material contained in this guide is copyrighted and owned by Global Processing Services Ltd together with any other intellectual property in such material. Except for personal and non-commercial use, no part of this guide may be copied, republished, performed in public, broadcast, uploaded, transmitted, distributed, modified or dealt with in any manner at all, without the prior written permission of Global Processing Services Ltd., and, then, only in such a way that the source and intellectual property rights are acknowledged.

To the maximum extent permitted by law, Global Processing Services Ltd shall not be liable to any person or organisation, in any manner whatsoever from the use, construction or interpretation of, or the reliance upon, all or any of the information or materials contained in this guide.

The information in these materials is subject to change without notice and Global Processing Services Ltd. assumes no responsibility for any errors.

1 About this Document

This guide describes the GPS IVR Solution.

Target Audience

This guide is aimed at new clients who do not have their own IVR solution, and existing clients switching to the GPS IVR solution.

What's Changed?

To find out what's changed since the previous release, see the [Document History](#) section.

1.1 Related Documents

Refer to the table below for other documents which should be used in conjunction with this guide.

Document	Description
Smart Client Guide	How to use Smart Client, which is an administration application that can be used to view and manage cards and transactions in your program.
Web Services Guide	Describes how to use the GPS SOAP API to send requests to GPS and provides specifications on the available web service calls.

Tip: See the [GPS Developer Portal](#) for a full suite of documentation.

2 Introduction

This topic introduces the GPS Interactive Voice Response (IVR) service which enables customers to call a phone number to perform various actions for their card.

Using this service, you can work with GPS to set up the following actions that customers can use in IVR:

- Activate their Card
- Check their Available Balance
- Report their card Lost or Stolen
- Unblock / Get PIN
- Hear Terms and Conditions

2.1 What are the Benefits?

Using IVR, you can give cardholders a different way of performing actions for their card.

A major benefit of offering an IVR service is that many customer queries can be covered by an automatic service, without involving customer support.

The cardholder receives benefits too. They can get support on queries without needing to spend long periods of time in a queue and waiting to speak to a real person.

2.2 How does the IVR solution work?

The GPS IVR service is based on Amazon Web Services Connect (AWS Connect). When a customer calls your designated phone number, the selection process is completed in AWS Connect. When the appropriate option has been selected by the cardholder, AWS sends a Web Service request to GPS to perform the relevant action.

Tip: For more information about Amazon Connect, see: [Amazon Connect](#).

When GPS has performed the necessary action, it passes the results back to the cardholder via AWS.

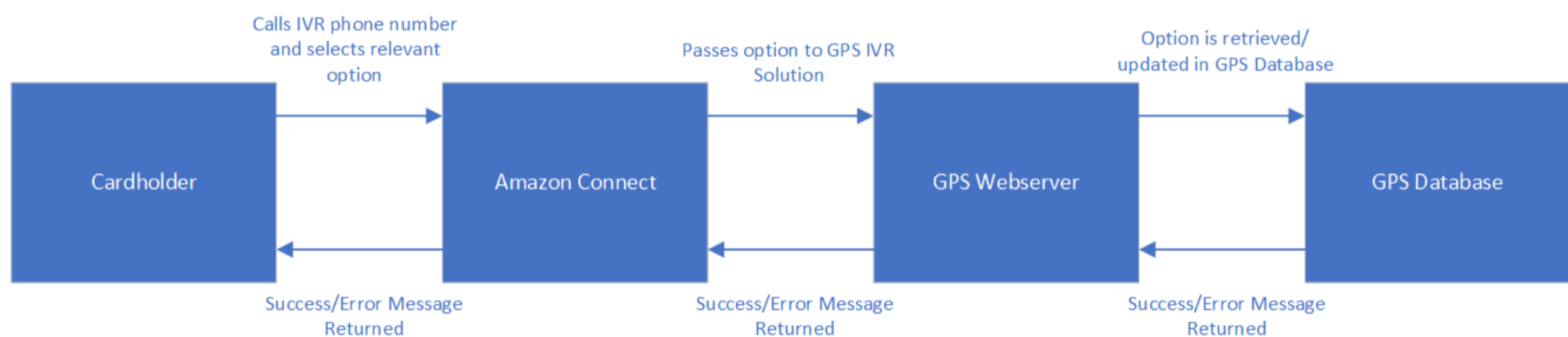


Figure 1: Components in the GPS IVR solution

The GPS IVR service is configured at Program Manager level (and will be available to all cards in your programme). To discuss initial IVR costs, speak to the Implementation team and then work with them to complete the IVR builder template.

3 IVR Options

This section describes the options available in the GPS IVR service, and provides details of how each option can be set up. Each option can have the wording changed as required for your programme.

Note: The IVR template call flows shown below are examples, and the elements are configurable. For example, in a flow where a cardholder is prompted to input a passcode following the PAN, this is a suggested flow.

3.1 Activate Card

The activate card IVR option enables the cardholder to activate a new card that they have received. After the cardholder has navigated the menu and selected the Activate Card option, they are asked to enter the PAN and passcode that has been sent to them. The IVR solution receives these details, forwards to GPS, and the GPS database checks if the card is already active. If it isn't then the card is activated in the GPS database and a success message is read back to the cardholder. The template flow for the activate card option is shown below:

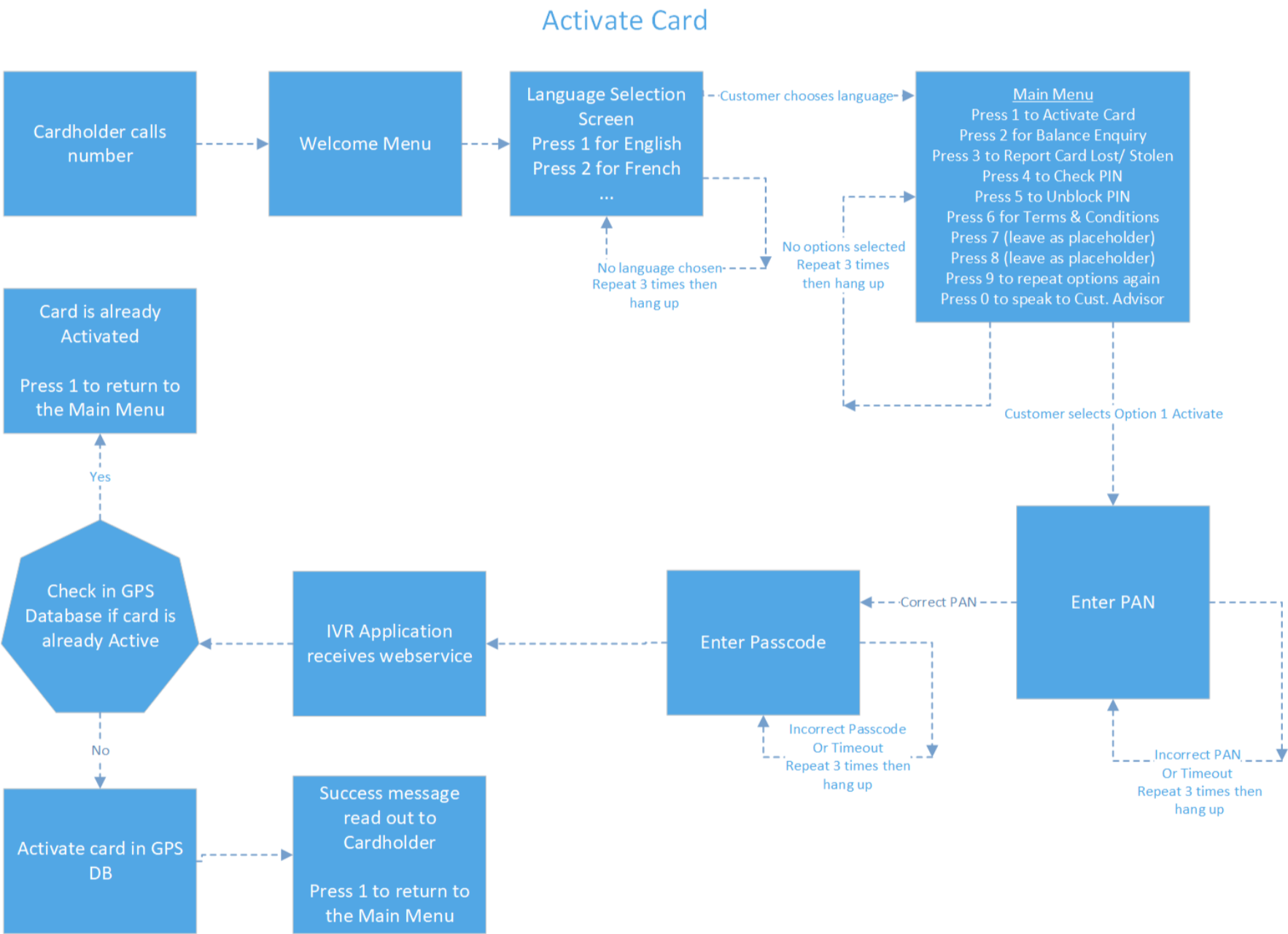


Figure 2: Activate Card Example Flow Diagram

3.2 Check Balance

The check balance IVR option enables the cardholder to call and find out what the current balance is for their card.

After the cardholder has navigated the menu and selected the Activate Card option, they are asked to enter the PAN and passcode that has been sent to them. The IVR solution receives these details, forwards to GPS, and the GPS database retrieves the card’s balance and then reads it back out to the cardholder.

A template flow for the check balance option is shown below:

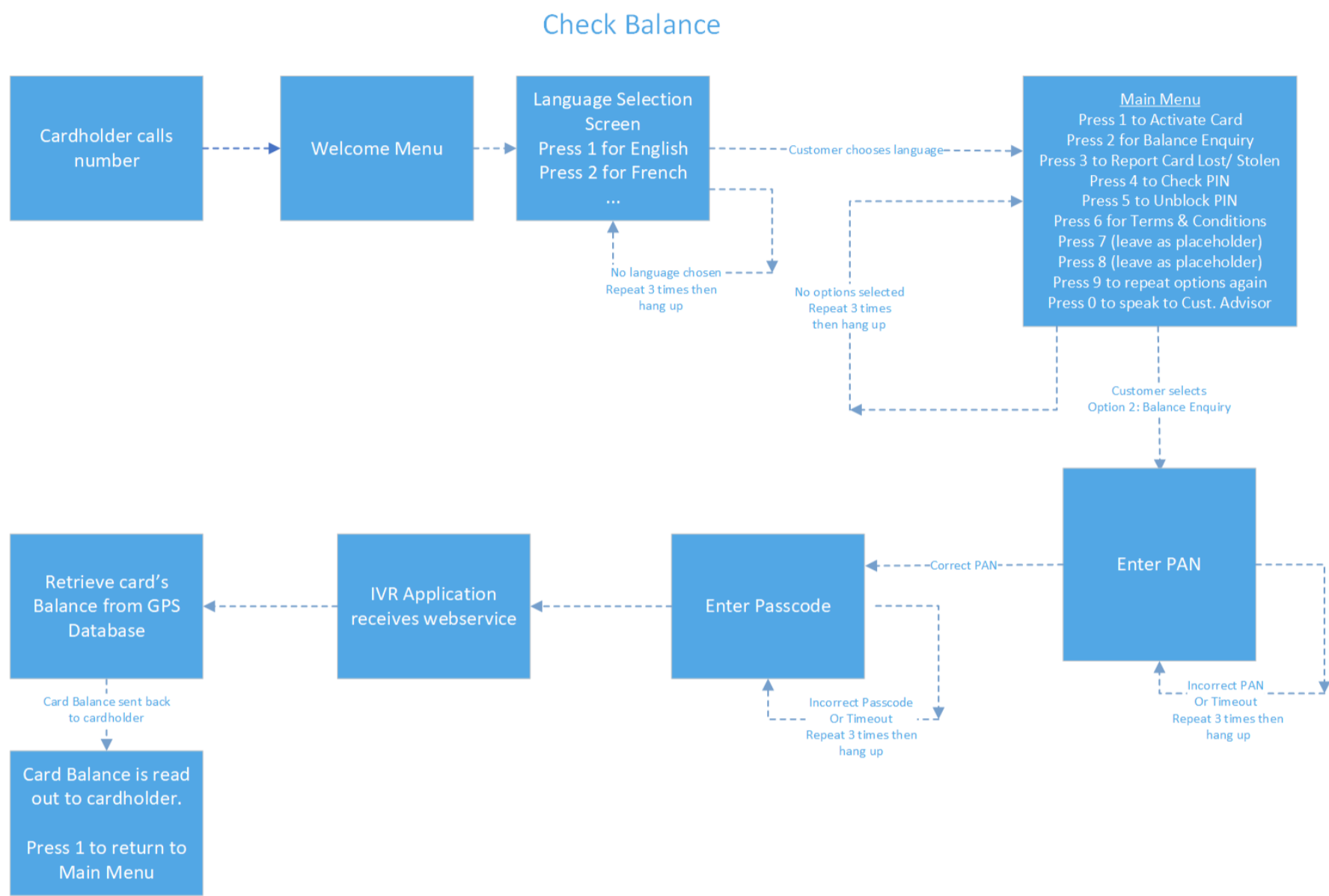


Figure 3: Check Balance Example Flow Diagram

3.3 Report Lost/Stolen Card

The report lost or stolen card IVR option enables the cardholder to call and report to you that their card has been lost or stolen, so that it can be made inactive.

After the cardholder has navigated the menu and selected the Report Card Lost/Stolen option, they are required to either enter the PAN and passcode that has been sent to them, or alternatively press a number on the phone to speak to a customer advisor.

If they enter the PAN and passcode, they are asked if they want to replace their card with a new one. The IVR solution receives the answer, forwards to GPS, and the GPS database updates the card status. The card's Lost/Stolen status is confirmed to the cardholder.

A template flow for the Report Lost/Stolen Card option is shown below:

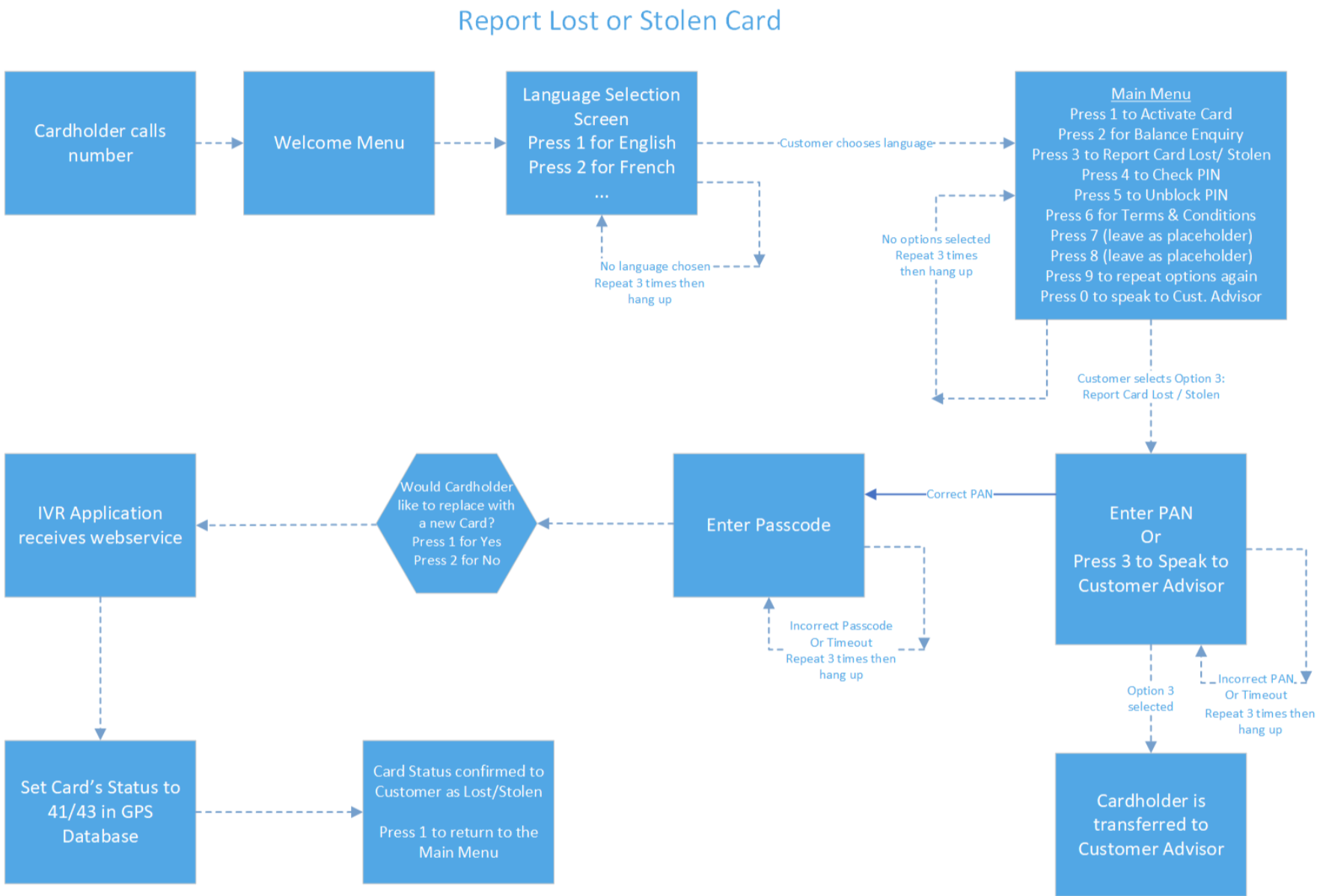


Figure 4: Report Lost/Stolen Card Example Flow Diagram

3.4 Unblock PIN

The unblock PIN IVR option enables the cardholder to unblock the PIN on their card.

After the cardholder has navigated the menu and selected the Unblock PIN option, they are asked to enter the PAN and passcode that has been sent to them. The IVR solution receives these details, forwards to GPS, and the PIN status is unblocked in the GPS database. The PIN Status is confirmed as unblocked to the customer.

A template flow for the Unblock PIN option is shown below:

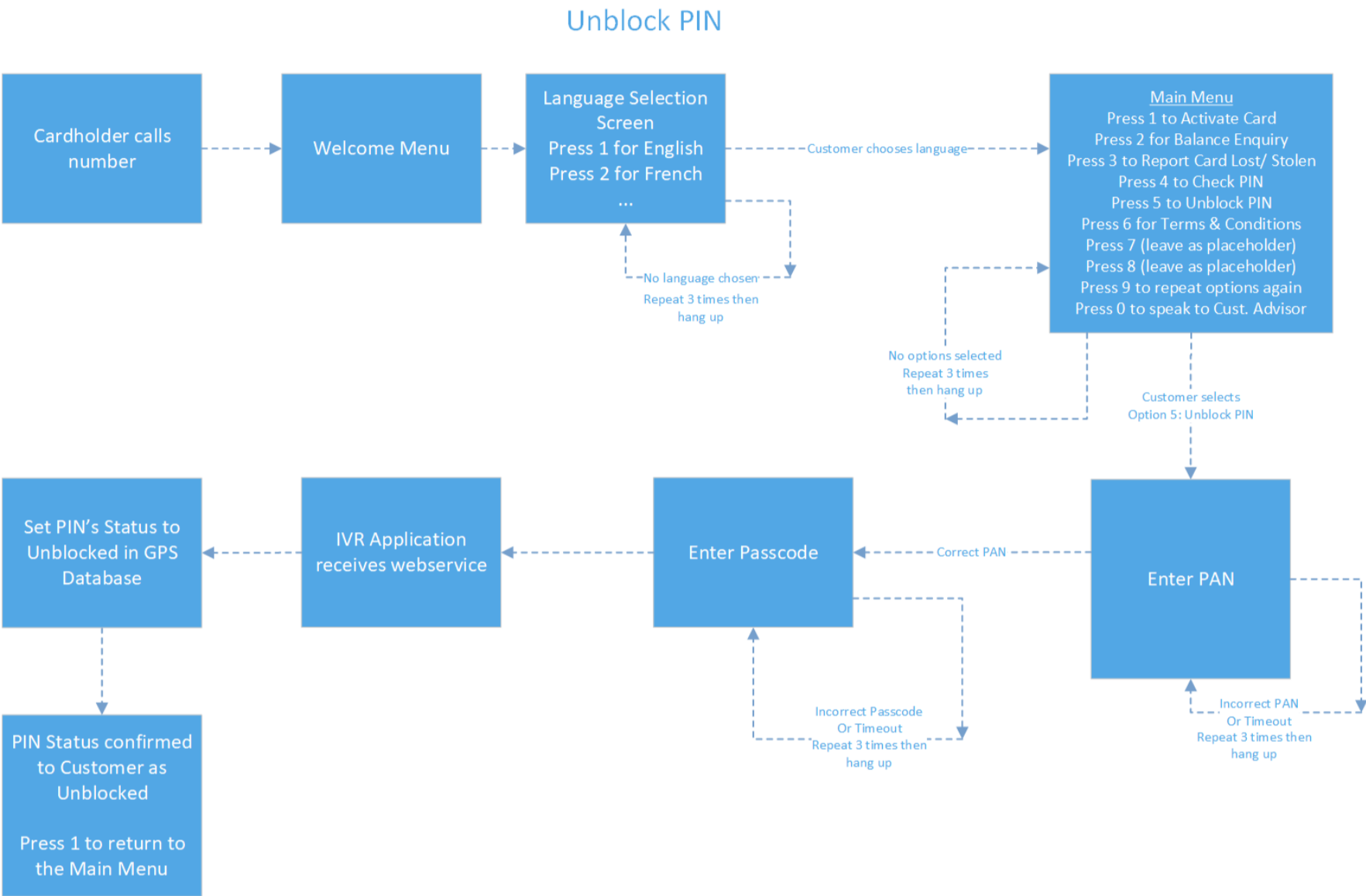


Figure 5: Unblock PIN Example Flow Diagram

3.5 Get PIN

The Get PIN IVR option enables the cardholder to listen to the PIN for their card.

After the cardholder has navigated the menu and selected the Get PIN option, are asked to enter the PAN and passcode that has been sent to them. The IVR solution receives these details, forwards to GPS, and the PIN is retrieved from the GPS database. The PIN is then read out to the customer.

A template flow for the Get PIN option is shown below:

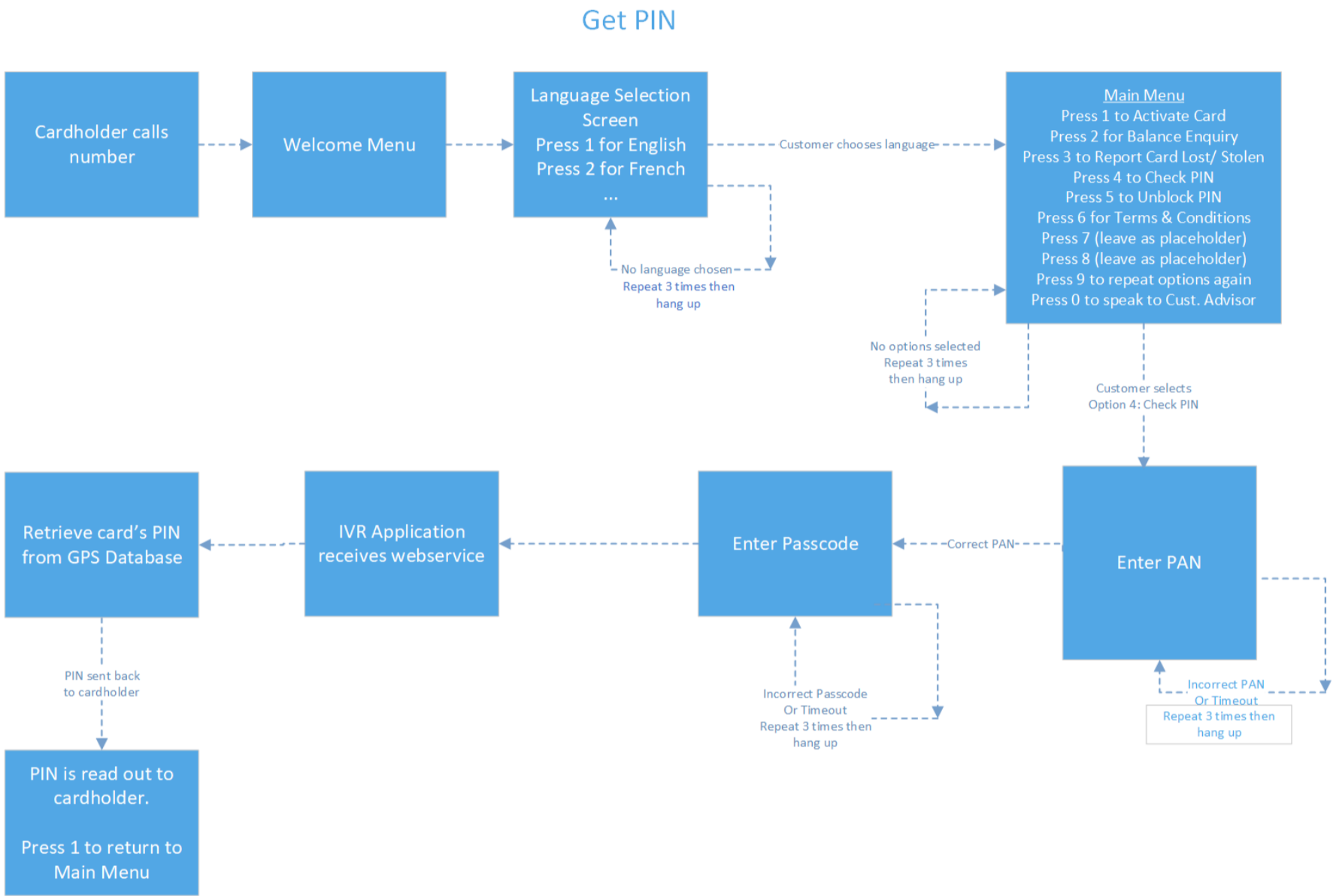


Figure 6: Get PIN Example Flow Diagram

3.6 Hear Terms and Conditions

The Hear Terms and Conditions IVR option enables the cardholder to have the terms and conditions read to them. After the cardholder has navigated the menu and selected the Hear Terms and Conditions option, the Terms and Conditions are read out to them. Alternatively, they can be instructed to visit a website where the terms and conditions are displayed. A template flow for the Terms and Conditions option is shown below:

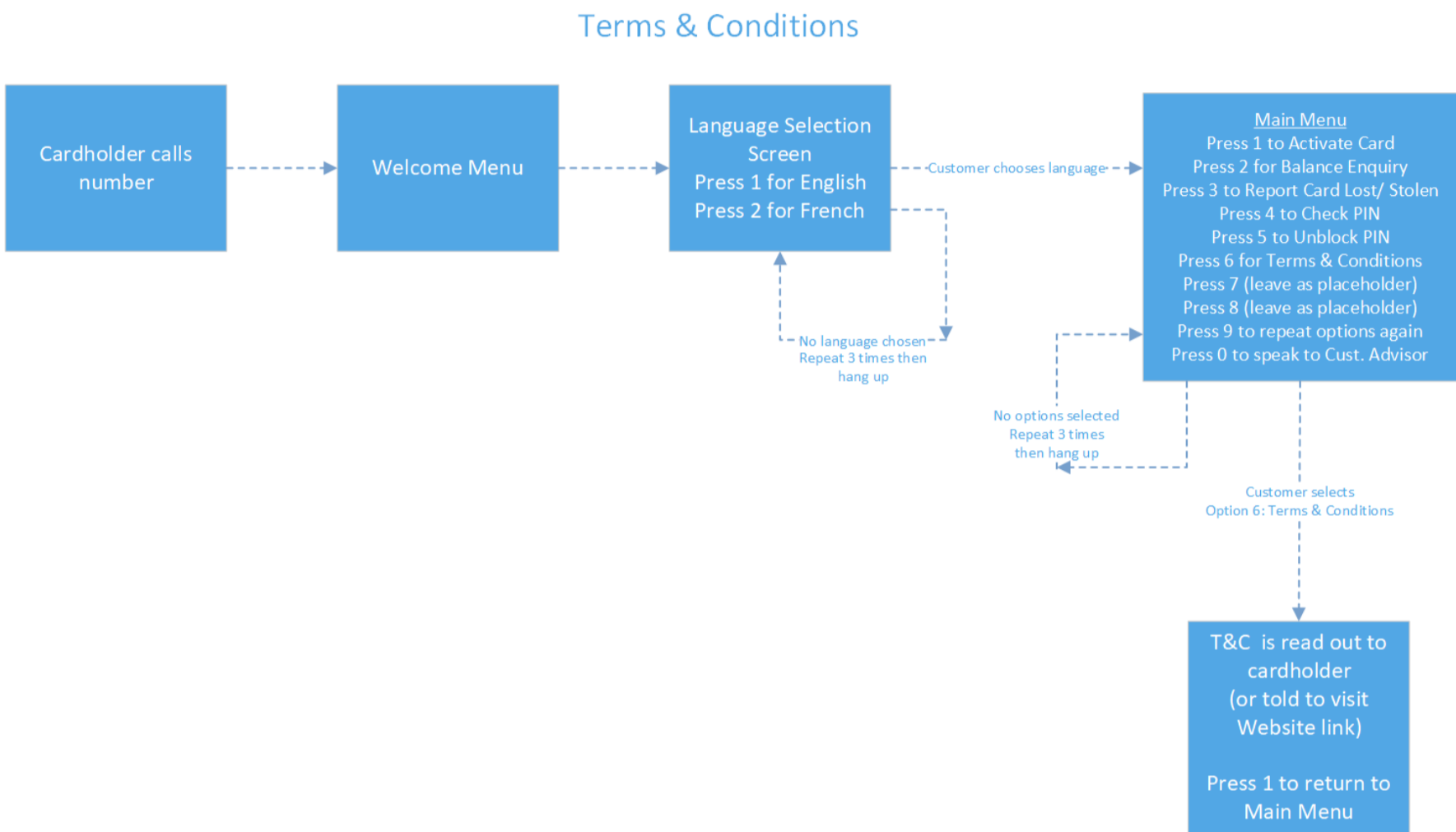


Figure 7: Terms and Conditions Example Data Flow

3.7 Speak with a Customer Advisor

The Speak with a Customer Advisor IVR option enables the cardholder to exit the IVR menu and speak to a customer advisor.

After the cardholder has navigated the menu and selected the Speak to a Customer Advisor option, they are taken out of the menu and put through to the next available customer advisor.

A template flow for the Speak with a Customer Advisor option is shown below:

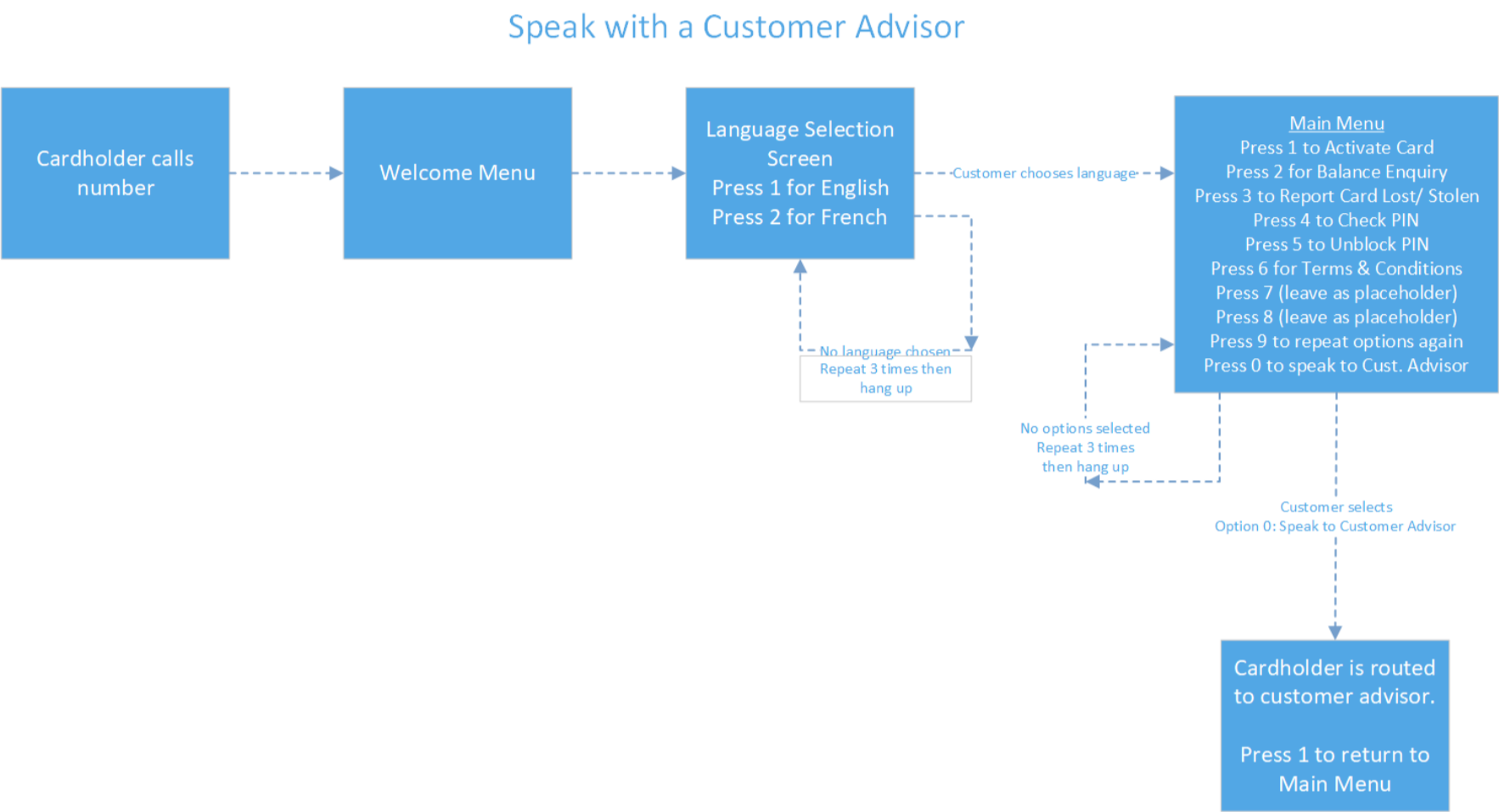


Figure 8: Speak with a Customer Advisor

4 FAQ

This section lists common questions about the GPS IVR solution.

Q. Our IVR is not working - what should we do?

You should raise a Jira to advise of any Live issues unless you have just gone live, in which case you should notify your Implementation Manager.

Q. What languages can I use?

The default language is British English, but there are 33 language options that can be selected in AWS Connect. For a full list of languages, see [Languages Supported by Amazon Polly](#).

Note: Pricing can be based on script, language, the number of minutes used in each month, and a monthly cost to support the service based on the size of the programme.

Glossary

This page provides a list of glossary terms used in this guide.

A

Amazon Polly

A service that turns text into lifelike speech, allowing you to create applications that talk.

AWS Connect

Amazon Web Services (AWS) Connect is a cloud contact centre solution that enables you to create and manage your IVR.

G

GPS Web Services

GPS's SOAP based Application Program Interface (API) which enables integration of your systems with GPS.

I

IVR

Interactive Voice Response (IVR) is a technology that allows you to interact with a computer-operated phone system using tones input on a keypad.

P

PAN

The Primary Account Number (PAN) is the card identifier found on payment cards, such as credit cards and debit cards, as well as stored-value cards, gift cards and other similar cards. The card's 16-digit PAN is typically embossed on a physical card.

Passcode

A 6-digit access code that is provided to the cardholder, and GPS, when creating a card.

PIN

Personal identification number.

Program Manager

A GPS customer who manages a card program. The program manager can create branded cards, load funds and provide other card or banking services to their end customers.

S

Smart Client

Smart Client is GPS's user interface for managing your account on the GPS Apex system. It is also called Smart Processor GPS. Smart Client is installed as a desktop application and requires a VPN connection to GPS systems in order to be able to access your account.

Document History

Version	Date	Description	Revised by
1.2	01/12/2022	Updated Copyright Statement.	MW
1.1	22/09/2022	New guide layout and HTML version now available	PC
1.0	23/06/2022	First version	JB

Contact Us

Please contact us if you have queries relating to this document. Our contact details are provided below.

Global Processing Services Ltd.
Support Email: ops24@globalprocessing.com
Support Phone: +442037409682

GPS Offices

UK Central Office	Singapore	Australia	Dubai, UAE
6th Floor, Victoria House Bloomsbury Square London WC1B 4DA	Republic Plaza 9 Raffles Place Singapore 048619	Stone & Chalk Level 4, 11 York Street Wynyard Green Sydney, NSW, 2000	EO 10, Ground Floor, Building 1 Dubai Internet City Dubai, United Arab Emirates

Technical Publications

If you want to contact our technical publications team directly, for queries or feedback related to this guide, you can email us at: docs@globalprocessing.com.